



20 O'Leary Drive Cooranbong NSW

4 2 2

This home welcomes first home buyers and investors to the Watagan Park lifestyle! A great opportunity to break into this highly sought after estate. Open plan living seamlessly joins the outdoor entertaining area and expansive backyard. The property also boasts the opportunity to create side/rear yard access for trailer or small vehicle parking.

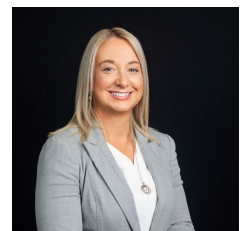
Highlights include:

- * Primary bedroom with ensuite and walk-in robe
- * Built-in wardrobes in all bedrooms
- * Alfresco entertaining ideal for BBQs and parties
- * Split system air conditioning for year round comfort
- * Separate living area perfect for a movie night or kids play area
- * Opportunity for side access for car, boat, trailer

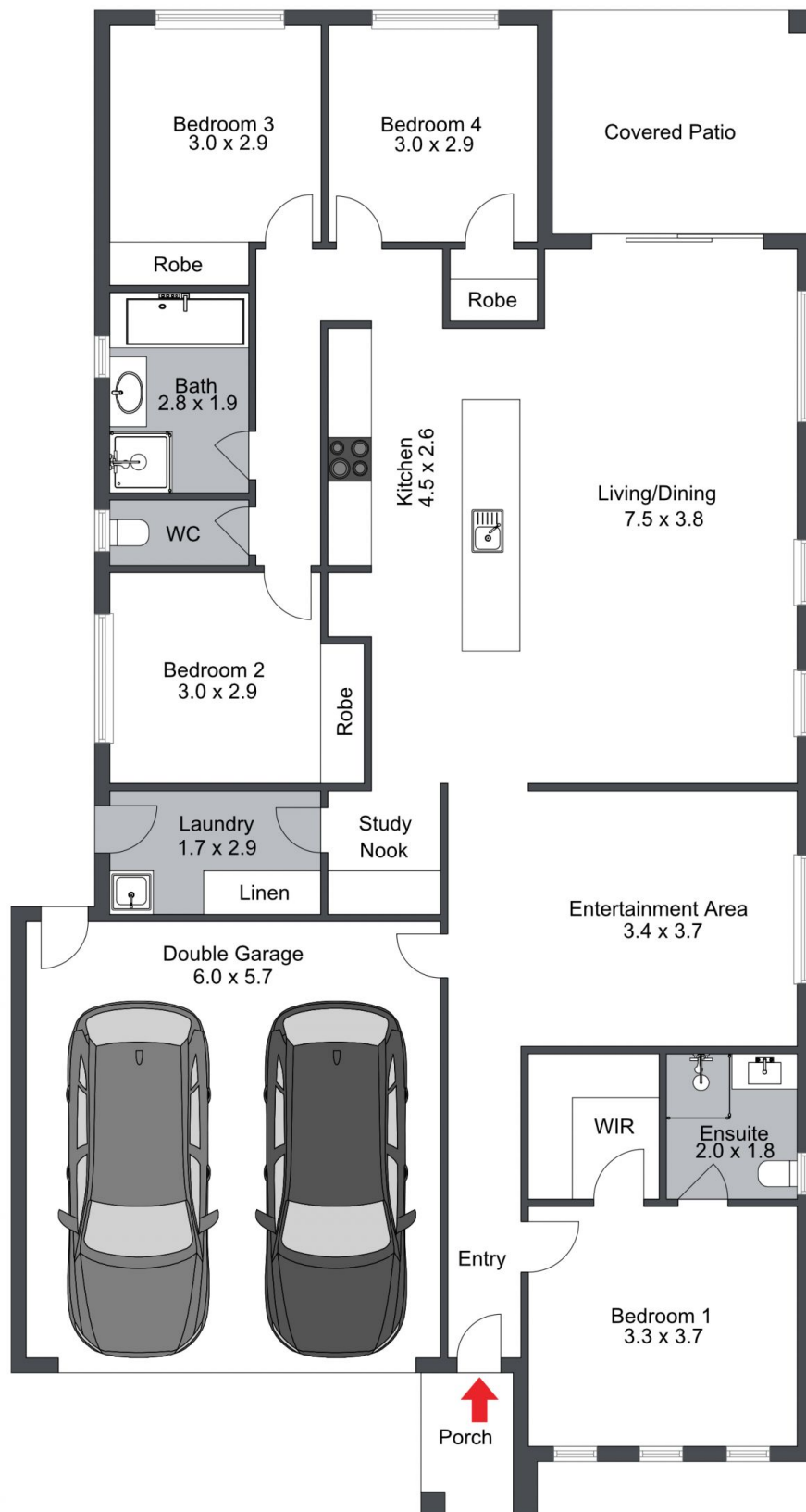
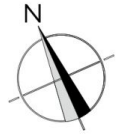
Price : \$ 775,000
Land Size : 553 sqm
View : <https://www.lawsonre.com.au/7978753>



Mitchell Petty
02 4973 3111



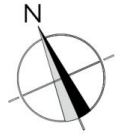
Kerrie Wright
02 4973 3111



20 O'Leary Drive, Cooranbong

The floor plan is not to scale; measurements are indicative and in metres. Exterior elements are not in position. Plans should not be relied on. Interested parties should make and rely on their own enquiries.

Produced by **DIAKRIT**



20 O'Leary Drive, Cooranbong

The floor plan is not to scale; measurements are indicative and in metres. All features included in this 3D plan are for inspiration purposes only. This is not an exact replica of the property or the position of exterior elements. Plans should not be relied on. Interested parties should make and rely on their own enquiries.

Produced by **DIAKRIT**