



## 1 Rousseau Place Cooranbong NSW

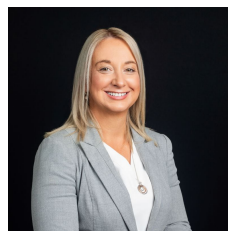
3  2  2 

Discover the charm of this delightful 3-bedroom home nestled in a welcoming, family-friendly neighbourhood. Perfectly combining comfort with an ideal location, this property is an excellent choice whether you're entering the housing market for the first time, seeking an investment opportunity, or downsizing.

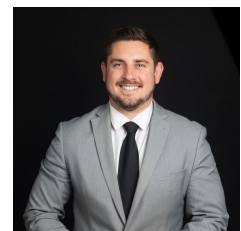
### Features include:

- \* Open plan Kitchen and dining area.
- \* Modern kitchen with breakfast bar
- \* Great level block
- \* Large double carport
- \* Fully fence yard with landscaped gardens
- \* Plantation shutters throughout the home
- \* Large covered outdoor area, perfect for entertaining
- \* Converted garage into extra accommodation or home office complete with extra bathroom.

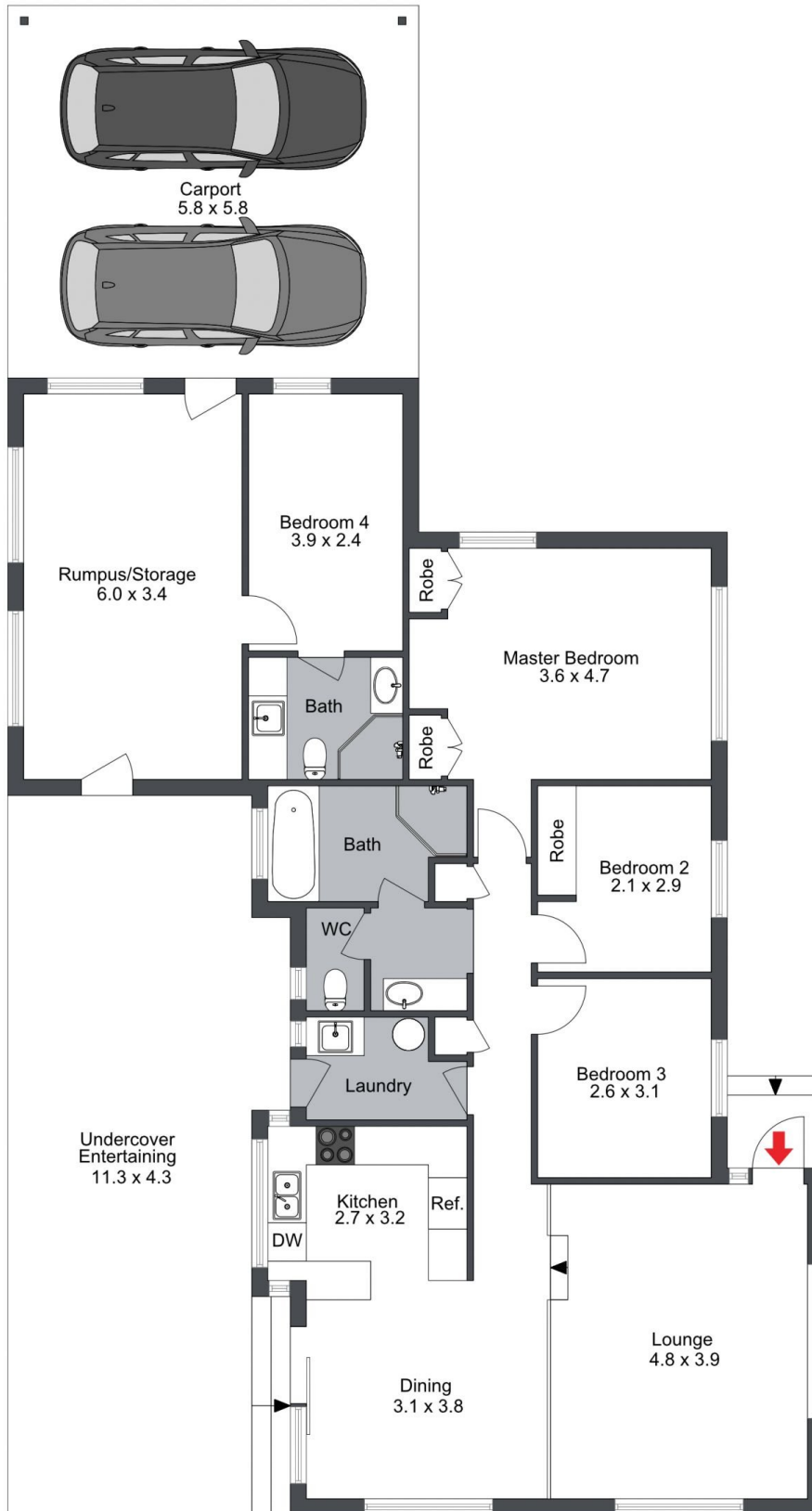
**Price** : Guide \$770,000 to \$795,000  
**Land Size** : 497.5 sqm  
**View** : <https://www.lawsonre.com.au/8079116>



**Kerrie Wright**  
02 4973 3111



**Mitchell Petty**  
02 4973 3111



### 1 Rousseau Place, Cooranbong

The floor plan is not to scale; measurements are indicative and in metres. Exterior elements are not in position. Plans should not be relied on. Interested parties should make and rely on their own enquiries.



## 1 Rousseau Place, Cooranbong

The floor plan is not to scale; measurements are indicative and in metres. All features included in this 3D plan are for inspiration purposes only. This is not an exact replica of the property or the position of exterior elements. Plans should not be relied on. Interested parties should make and rely on their own enquiries.

Produced by **DIAKRIT**