



65 Mountain Ash Drive Cooranbong NSW

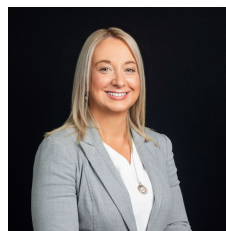
4 2 2

This pristine, newly constructed residence offers a spacious single-level layout adorned with stylish, high-end finishes throughout. Built by the renowned McDonald Jones Homes, this quality property is one you'll be eager to call your own. This impeccably presented home, with its seamless indoor-outdoor living and prime location, is a fantastic choice for families or retirees seeking a relaxed lifestyle. As you enter, you'll be welcomed by a warm and inviting ambiance. The open-concept design seamlessly integrates the living, dining, and kitchen spaces, creating an ideal environment for hosting guests or enjoying time with family.

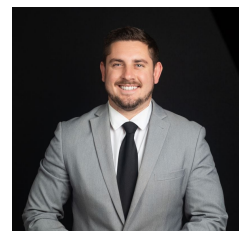
Highlights Include:

- * Expansive master bedroom with a large ensuite and walk-in robe
- * Built-in wardrobes in all bedrooms

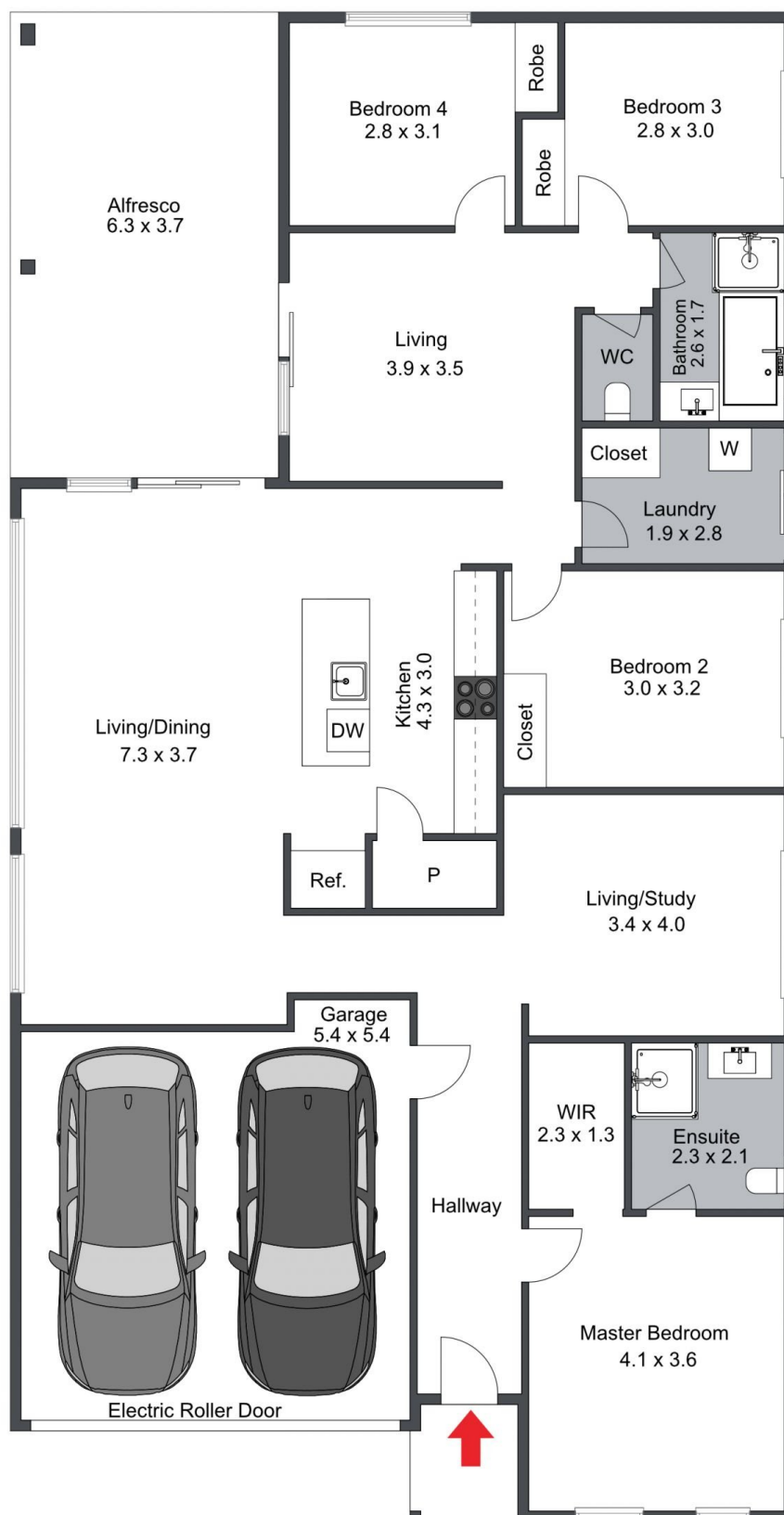
Price : \$920,000 to \$985,000
Land Size : 650 sqm
View : <https://www.lawsonre.com.au/8111196>



Kerrie Wright
02 4973 3111



Mitchell Petty
02 4973 3111



Internal Area: 191 sqm. Approx.
 External Area : 27 sqm. Approx.
 Total Area: 218 sqm. Approx.

65 Mountain Ash Drive, Cooranbong

The floor plan is not to scale; measurements are indicative and in metres. Exterior elements are not in position. Plans should not be relied on. Interested parties should make and rely on their own enquiries.

Produced by **DIAKRIT**



65 Mountain Ash Drive, Cooranbong

The floor plan is not to scale; measurements are indicative and in metres. All features included in this 3D plan are for inspiration purposes only. This is not an exact replica of the property or the position of exterior elements. Plans should not be relied on. Interested parties should make and rely on their own enquiries.

Produced by **DIAKRIT**