



31 Verdelho Street Bonnell's Bay NSW

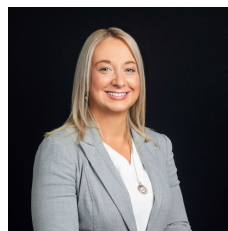
4 2 2

Experience the epitome of luxury and sophistication in this exceptional executive residence, beautifully situated across from a serene nature reserve. This home has been designed with elegance in mind, from its high-end finishes to its thoughtful layout. The attention to detail is evident throughout, making this residence not only a place to live but a statement of luxury.

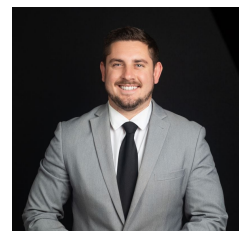
Highlights include:

- * Gourmet kitchen showcasing exquisite stone countertops and top-of-the-line Smeg appliances
- * Dedicated media room, ideal for immersive movie nights and thrilling sports events
- * Spacious main bedroom with tranquil, leafy vistas
- * Opulent ensuite and spacious walk-in robe
- * Ducted air-conditioning throughout
- * Alfresco living area and a meticulously landscaped, level

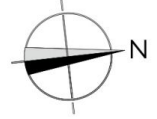
Price : \$ 1,000,000
Land Size : 550 sqm
View : <https://www.lawsonre.com.au/8112769>



Kerrie Wright
02 4973 3111



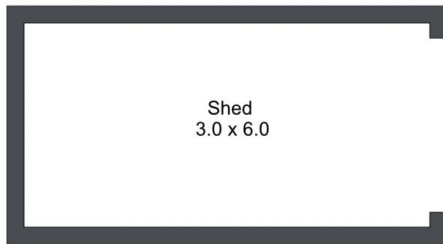
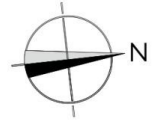
Mitchell Petty
02 4973 3111



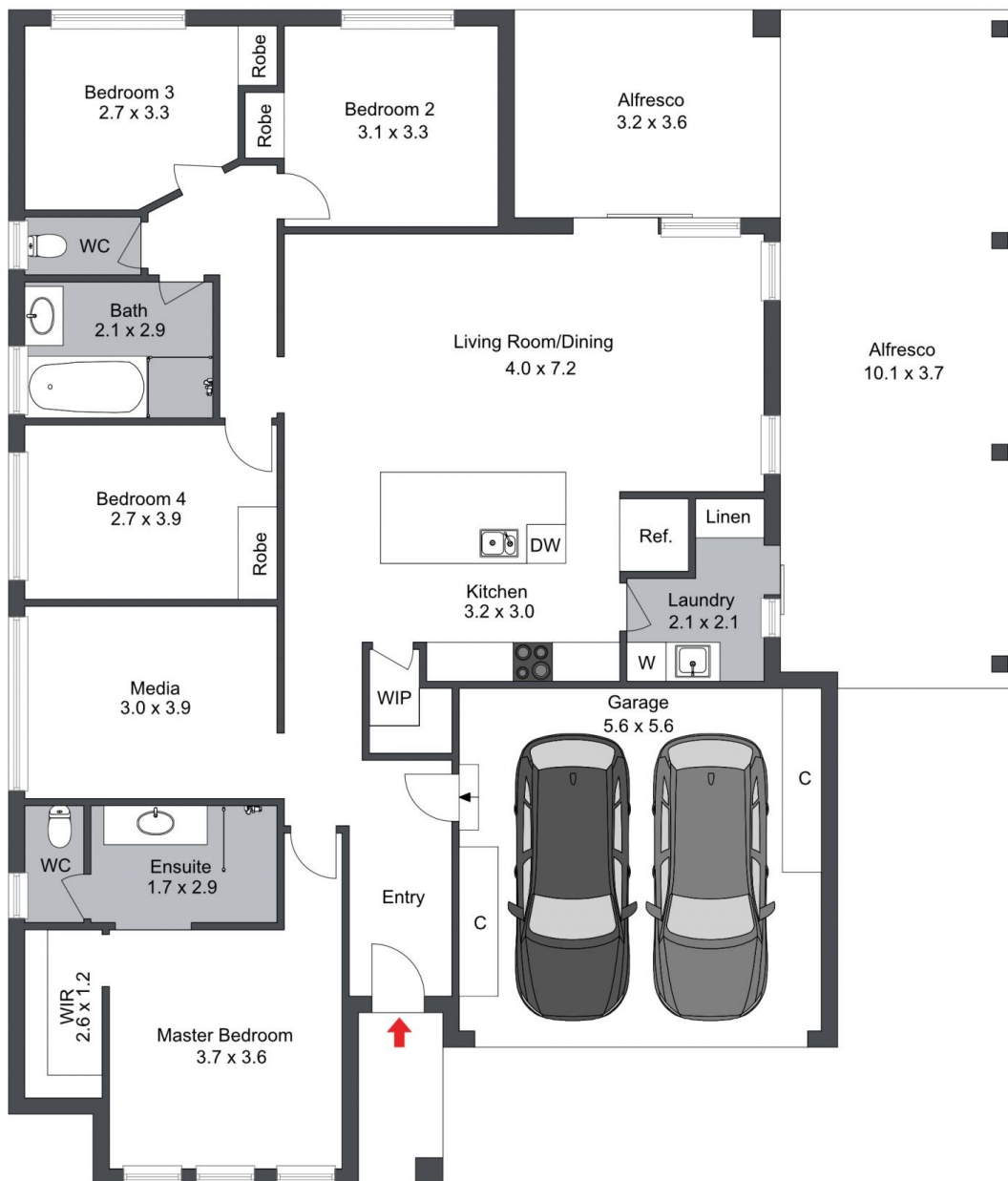
31 Verdelho Street, Bonnell's Bay

The floor plan is not to scale; measurements are indicative and in metres. All features included in this 3D plan are for inspiration purposes only. This is not an exact replica of the property or the position of exterior elements. Plans should not be relied on. Interested parties should make and rely on their own enquiries.

Produced by **DIAKRIT**



(Not In Position)



31 Verdelho Street, Bonnells Bay

The floor plan is not to scale; measurements are indicative and in metres. Exterior elements are not in position. Plans should not be relied on. Interested parties should make and rely on their own enquiries.

Produced by **DIAKRIT**