



## 19 De L'isle Drive Watanobbi NSW

4 1 2

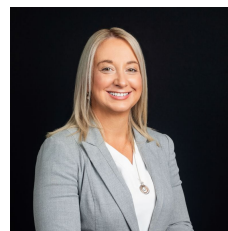
This charming brick home offers a comfortable and practical single-level layout, perfect for first home buyers or investors. With a spacious, low-maintenance backyard for kids to play and plenty of room for a shed or pool, this property would make a great first home with opportunity to add your own touches.

### Highlights Include:

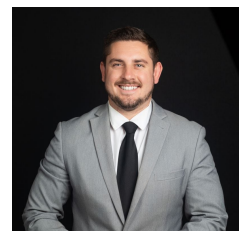
- \* Spacious backyard with a garden shed
- \* Large kitchen with separate dining
- \* Carport and single car lock-up garage for secure parking
- \* Close to the local schools, shops and parks
- \* Fantastic first home or investment property

Situated in a convenient location, you're just a short drive away from Wyong Shopping Centre, the Railway,

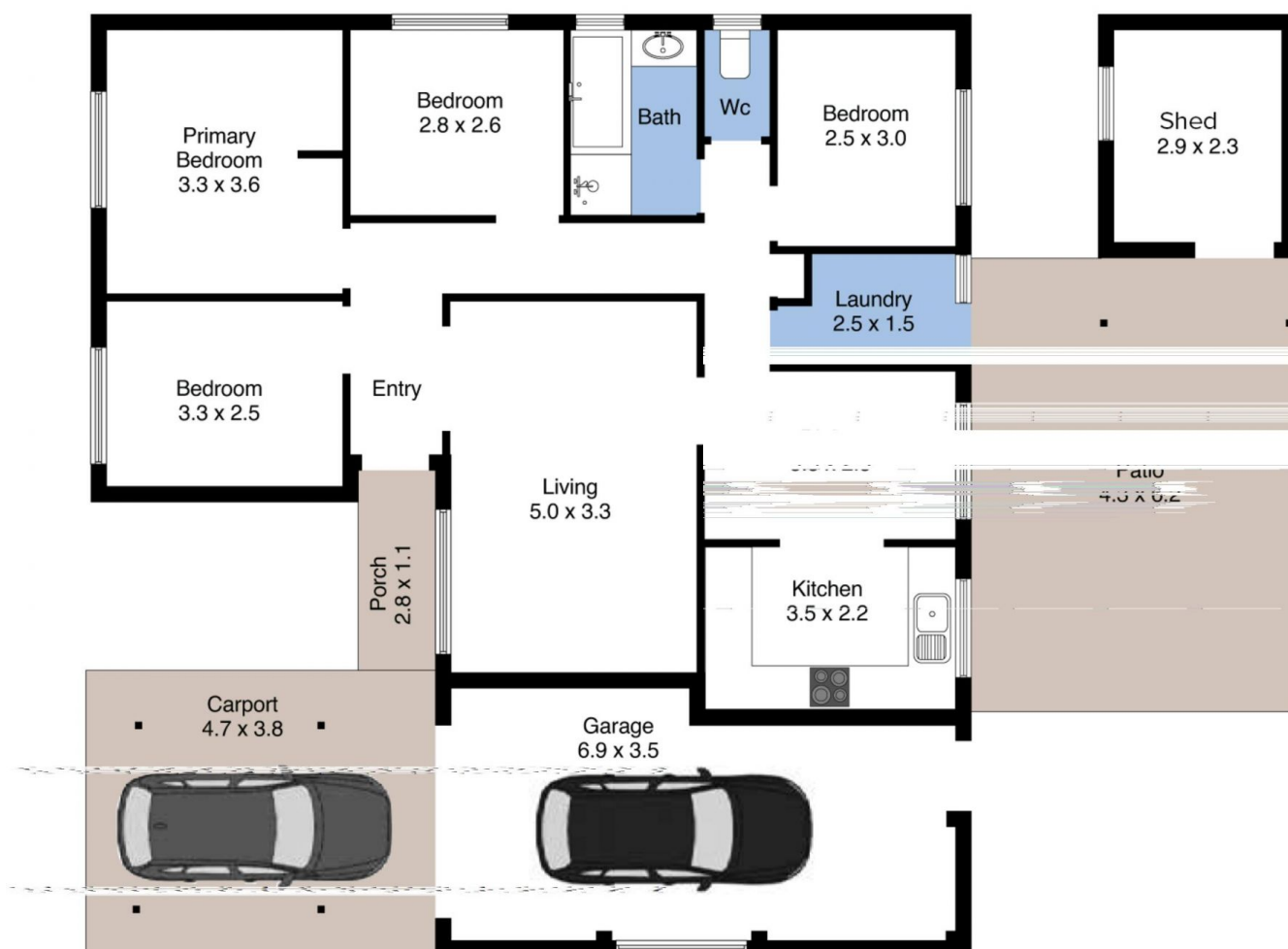
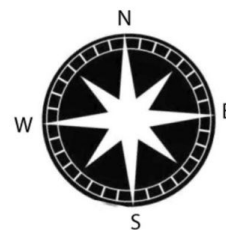
**Price** : Auction Guide: \$750,000  
**Land Size** : 576 sqm  
**View** : <https://www.lawsonre.com.au/8141578>



**Kerrie Wright**  
02 4973 3111



**Mitchell Petty**  
02 4973 3111



## 19 DeL'isle Drive, Watanobbi

The floor plan is not to scale; measurements are indicative and in metres. Exterior elements are not in position. Please should not be relied on. Interested parties should make their own enquiries.